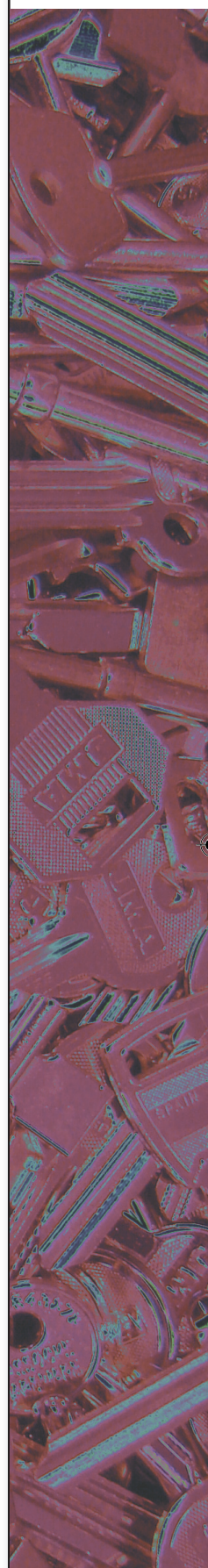


CONTENTS



<u>Section</u>	<u>Page</u>
Household Cylinder, Cam Lock, Padlock	1 - 100
Vehicle Car, Van, Truck, Transponders	101 - 202
Motorcycle Scooter, Moped, Quad, Motorcycle	203 - 220
Vehicle Utility Caravan, Petrol Cap , Roof Racks, Boat, Plane	221 - 232
Industrial Aerial Lift, Forklift, Plant Equipment	233 - 242
Window Bolt, Handle, Secondary Security	243 - 252
Universal Mortice Mortice, Rim, Cabinet, Padlock, Safe	253 - 260
Manufacturer Mortice Ace, Chubb, Gibbons, Legge, etc.	261 - 304
Single Bit Safe Universal & Manufacturer	305 - 326
Double Bit Safe Universal & Manufacturer	327 - 354
Church Church, Presentation	355 - 378
Special Mortice Budget, Meter, Wardrobe	379 - 386
Index & Price Codes	387 - 402





INTRODUCTION



The SKS Catalogue

Welcome to our latest Key Blank Catalogue.
Clear, user friendly and making life easier.

Designed for the UK Key Cutter!

We believe this is the most comprehensive key catalogue available in the UK. It combines a vast range of quality JMA key blanks and is supplemented with keys from other major manufacturers.



SKS - The Company

Established in 1972, SKS have acquired a comprehensive wealth of knowledge, gained from nearly 40 years experience. With determination and customer focus, SKS are now the largest Key Blank supplier to the independent trades in the UK.



JMA Partnership

Since 1984 SKS have been the sole importers of JMA Key Blanks. Quality, range and availability have enabled JMA to become Europe's No. 1 Key Blank producer.

JMA's experience and technology in producing OEM original keys for lock manufacturers enables them to produce blanks with complete accuracy.

Over 1.5 million keys are produced every day in their Spanish factory!



A Passion for Keys

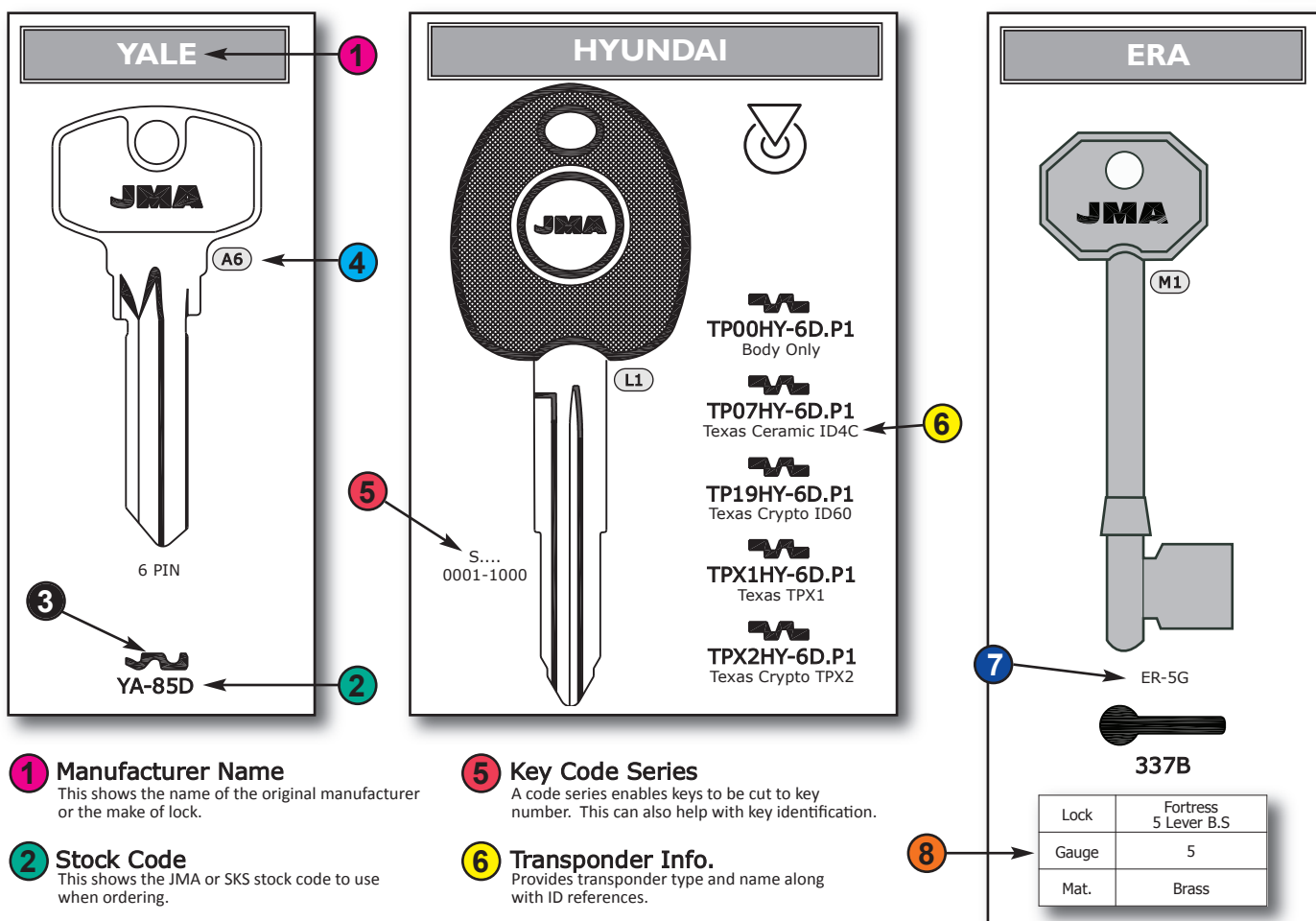
SKS have a true passion for keys and we feel this new catalogue clearly demonstrates the pride we put into the trade.

Living and breathing "Keys" SKS are able to give unrivalled technical support and advice to their customers.

Our passion allows us to continue to source new keys and work with manufacturers to offer the key cutter the most up to date range of keys.

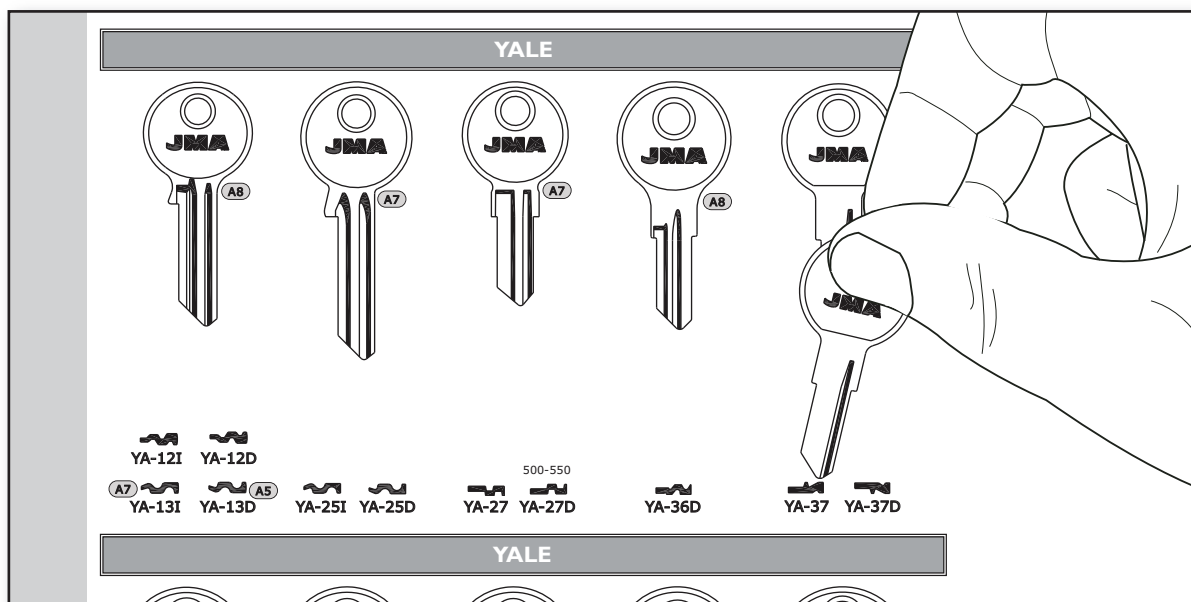


KEY BLANK IDENTIFICATION



All the keys in this catalogue are drawn to a 1:1 scale. To check a key against any key in this catalogue, you:

- 1) Place the key on top of the drawing, paying particular attention to the blade length and width.
- 2) Place the key upright over the profile as though the key is entering the lock. Check both sides to see if the profile is a good match.



Personalised Cool Keys

Advertise your business in a unique and stylish way!



'B' Head



'G' Head

A new modern and unique way of promoting your business and it's services. This high detailed printing process will allow you to put any design onto the key head. Display your shop front, company logo or list your services - the possibilities are endless! Each key has a double sided hardwearing polyurethane lens domed finish.

Available in 2 Head Shapes:

'B' Head for U-5D & U-6D

'G' Head for 1A, UN-11, U-4D, U-5D & U-6D

Fast 7-10 day production once artwork has been signed off.

www.skskeys.co.uk